



RANA[®] STEELS INDIA LTD.

we make the nation strong



Angle | Channel | T-Iron | Square | Round | Flate | Girder | C.T.D. Bars | TMT Saria

RANA® GROUP OF COMPANIES

INTRODUCTION

RANA® STEELS INDIA LTD., Muzaffarnagar (U.P.) since its establishment, is engaged in manufacturing of super quality **Angle, T-Iron, Channel, Flat & Square** of all ranges.

RANA® PRODUCTS are manufactured & tested to suit the specific applications, chemical & physical properties are assured for a wide range of applications. Thus, customers have infinite options for making the choice for the best result and life long satisfaction. **RANA® STEELS INDIA LTD.** offers the best of the products & services to its quality-conscious customers. That's why **RANA® PRODUCTS**, have become synonymous for quality which is unmatched. If you ask dealers, distributors, engineers, designers & fabricators their spontaneous reply and recommendation will be to use a single brand of steel "**RANA® PRODUCTS**" and nothing else. The firm faith has developed among users by repeated use of **RANA® PRODUCTS**, unmatched performance and reliability in quality, work ability and economy. We are doing continuous efforts in our plant (R&D) to improve our quality standard. Thus from a very hard work & rousting procedure now this single **RANA® STEELS** has turned into group of companies in a very short span of time, it is just done because of hard labour, quality consciousness, motivation, discipline & to adopt high class procedures for making **RANA® PRODUCTS**.

MOTIVE / VISION

RANA® GROUP has touched the lives of people by giving them unmatched strength and technology, Un-interrupted growth & diversification. **RANA® GROUP** has millions of hands with them, which when joint will muster all the vigor, all the strength and all the goodness in the production of **RANA® Angle, Channel** & all of its products. The Brains behind our workers are our technicians, qualified staff who foresee the upcoming requirements, innovation and the changes in the market. The R&D department keeps itself abreast with the technological advancements taking place in the world. The satisfied consumers as well as the customers all over the countries raised the moral by being loyal. We ourselves venturing out new ideas, new projects, new

vision everyday, every moment while moving onto the path on advancement. **RANA® GROUP** believes in quality, customer satisfaction, technological upgrading & reduction of costs. **RANA® GROUP'S** target is to ensure rigorous sampling and timely testing of products to meet quality standards continuous improvements of quality of products through technological up gradation. To lower down the price of the final product by minimizing the production cost. Uninterrupted production by ensuring proper working conditions and maintaining proper system in mill.

NETWORK

The **RANA® GROUP** has a very large network of authorised distributors and dealers to ensure timely and quick availability of **RANA® Angle, Channel** & all of its products.



Corporate Office

There are Sufficient reasons to accept superiority of

RANA® ANGLE

in respect to the other angles.

PLAIN TRUTH

Ingot are purchased strictly as per the specifications to suit the service requirements of the **RANA® Angle** Rolling practice is so planned that it improves the quality, impact/shock resistance, strength, toughness and other mechanical properties in the finished products. Stage-inspections prevent development of defects during rolling. Cole straightened **RANA® Angles** in 18" & 20" length ensure fine-grained met allographic structure in hot rolled angles produced at our plant.

MECHANICAL PROPERTIES

Designation	UTS (Min.)	Yield Strength		Elongation	Internet Dia for Bend Test
		20-40 mm	>40 mm		
	Mpa	Mpa	Mpa	Percentage	Mn
Fe410A	230	240	410	23	3*



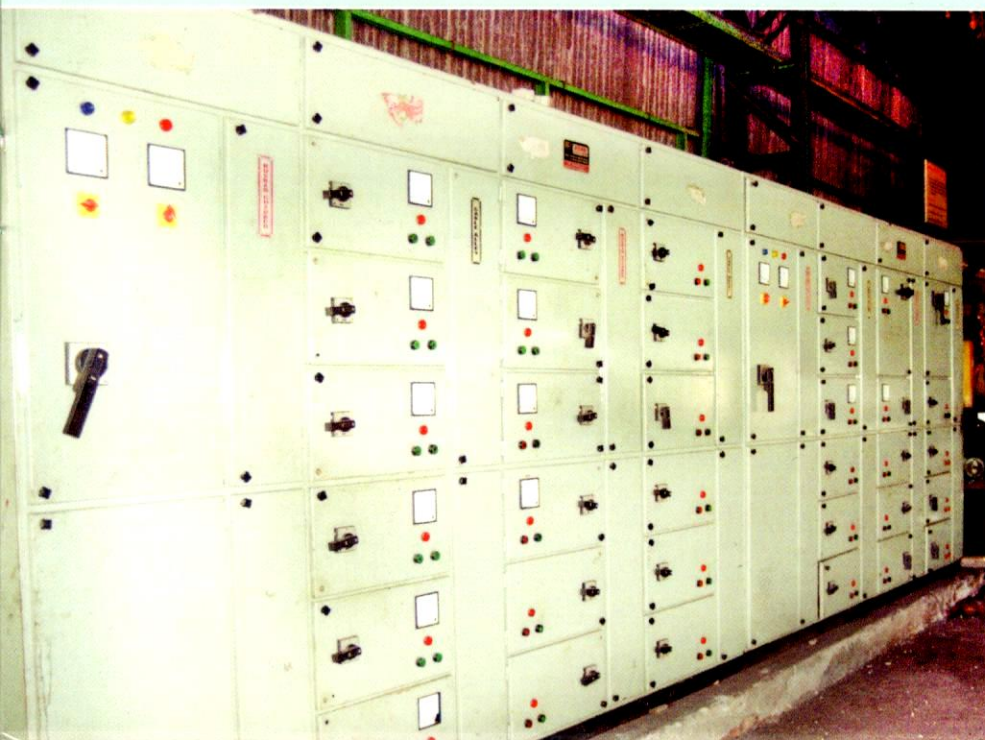
SPECTROMETER

We used metal power made spectrometer for quick and accurate chemical analysis which help in mass production.

CHEMICAL COMPOSITION

Carbon	Manganese	Sulphur	Phosphorous	Carbon Equivalent	Supply Conditions	Deoxidation
0.20±0.03	1.5±0.05-0	0.-5±005-0	0.05+0.005	0.42	As rolled	Semi killed or killed

We are already **ISI** marked and **ISO 9001:2000** Certified Company



Comparison Chart for the benefit to user

Merits of **RANA® ANGLE & CHANNEL**

PLAIN TRUTH

Tested high tensile strength and yield strength makes **RANA® Products** to perform better than others

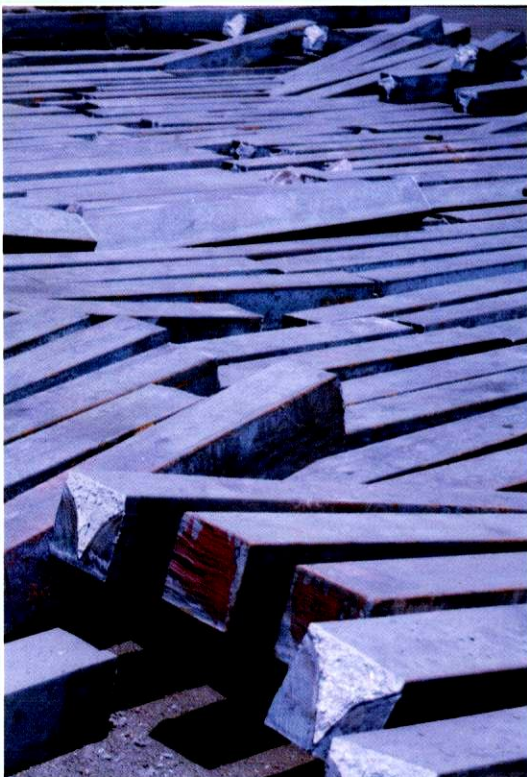
Balanced Chemical composition is a guarantee for uniform quality for designers and high order of weldability for fabricators.

State-of-the art technology for manufacturing & testing assures users about physical properties like bendability, formability, machine ability inspections along with creep & fatigue endurance in **RANA® Products**.

Rigorous incoming material tests, stage inspections and final inspections along with careful handling of **RANA® Products** make them defect-free.

Automatic control of parameter & work conditions permit us to supply finished products in desired grains, good micro Structures and freedom from thermal/mechanical stress.

Optimum ductility & bendability essentially save energy in welding & offer ease in fabrication.



FACTOR CONSIDERED	RANA ANGLES	OTHER ANGELS
Effective Utilization	100% of Rana® Angles get used because of superior quality products.	90% of Angels get used as at least 10% of the angels purchased are discarded as defective.
Light weight Sections	Rana® Angles are made light weight yet Strength Remains due to state of the art technology and high Quality input materials.	If other reduce the weight per meter the strength & reliably become doubt full.
Inventory levels	Rana® Steels is capable of supplying the ordered quality instantly thus, consumer does not need to maintain stocks of Angle.	Supply is not very smooth, and hence, the user has to maintain certain stock level leading to block of huge amount.
Quality of Raw Materials	Rana® Steels uses ingote & billets obtained from Quality steel mills thus Rana® Angle are necessarily high quality materials.	They use ingots and re-roll scraps for earning huge profits.

QUALITY CONTROL & SALES NETWORKS

RANA® STEELS has very qualified and professionally managed team which has all the capabilities to test chemically & physically of all the aspects of raw material through high tech-laboratories by which the high class products come out. A continuous effort is being done to strength our art of technology towards full automation. High class technology make us able to produce one of the finest products. **RANA® STEELS** already ISI Marked an ISO - 9001-2000 certified company.

Sales is an very important aspect for every company that's why **RANA® STEELS** make very systematics, broad & proper channel of distributors, dealers to ensure quickly availability of **RANA® Products** to customers on time. Our effort is to make sales network strong & more flexible through which **RANA® Products** may be easily in-reach for our customers.



Jagmohan Singh (Billu)
General Manager



ANGLE

Size (mm.)	Wt. (Kg./Feet)	Size (mm.)	Wt. (Kg./Feet)
A-25x3	0.337	A-75x5	1.737
A-25x5	0.538	A-75x6	2.067
A-32x3	0.437	A-75x8	2.705
A-35x4	0.638	A-75x10	3.343
A-35x5	0.790	A-90x6	2.500
A-40x3	0.547	A-90x8	3.290
A-40x4	0.730	A-90x10	4.080
A-40x5	0.910	A-100x6	2.777
A-40x6	1.064	A-100x8	3.665
A-45x4	0.823	A-100x10	4.535
A-45-5	1.036	A-100x12	5.400
A-50x4	0.910	A-110x10	5.025
A-50x5	1.155	A-110-12	5.975
A-50x6	1.308	A-130x10	5.985
A-60x4	1.110	A-130x12	7.120
A-65x5	1.490	A-150x10	6.940
A-65x6	1.763	A-150x12	8.270
A-65x8	2.340		



Weight of Equal Leg Angle, Channel as per Indian Standard as per IS:2062-99

FLATE

Size (mm.)	Wt. (Kg./Feet)	Size (mm.)	Wt. (Kg./Feet)
F-20x5	0.239	F-75x8	1.436
F-25x5	0.299	F-75x10	1.794
F-25x6	0.359	F-75x12	2.153
F-25x10	0.598	F-100x6	1.436
F-32x5	0.383	F-100x8	1.914
F-32x6	0.459	F-100x10	2.393
F-40x5	0.479	F-125x6	1.795
F-40x6	0.574	F-125x8	2.395
F-40x8	0.766	F-125x10	2.992
F-40x10	0.957	F-125x12	3.590
F-50x5	0.596	F-150x6	2.153
F-50x6	0.718	F-150x8	2.871
F-50x8	0.957	F-150x10	3.589
F-50x10	1.196	F-150x12	4.307
F-50x12	1.436	F-150x16	5.742
F-50x16	1.914	F-150x20	7.178
F-50x20	2.393	F-150x25	8.972
F-65x5	0.778	F-200x6	2.871
F-65x6	0.933	F-200x8	3.828
F-65x8	1.244	F-200x10	4.785
F-65x10	1.555	F-200x12	5.742
F-65x12	1.866	F-200x16	7.656
F-75x5	0.897	F-200x20	9.570
F-75x6	1.077	F-200x25	11.963



CHANNEL

Size (mm.)	Wt. (Kg./Feet)
RG-65x30	1.000
MC-75x40	2.170
MC-100x50	2.915
R-100x50	2.000
RS-100x50	1.800
R-75x40	1.400
RS-75x40	1.200
MC-125x65	3.984
MC-150x75	5.120
MC-175x75	5.975
MC-200x75	6.798
MC-250x82	10.425
MC-300x90	11.065



T-IRON

Size (mm.)	Wt. (Kg./Feet)
T-50x5	1.140
T-50x6	1.372
T-40x6	1.100
T-40x5	0.910
R-75x75x10	3.300
RD-75x75x10	2.800
RS-75x75x10	2.200
II-75x75x10	1.900
R-9800-R-65x50x5	1.300
India Super No. 1	1.400
RIS No. 1-72x50x5	1.500



ROUND

Size (mm.)	Wt. (Kg./Feet)
R-20 mm	0.752
R-22 mm	0.910
R-25 mm	1.174
R-32 mm	1.923

SQUARE

Size (mm.)	Wt. (Kg./Feet)
Sq-10 mm	0.239
Sq-12 mm	0.345
Sq-16 mm	0.612
Sq-20 mm	0.957
Sq-25 mm	1.495
Sq-32 mm	2.440



RANA® GROUP OF COMPANIES

RANA® STEELS INDIA LIMITED

(Manufacturing of Steel Structures)



RANA® GIRDERS LIMITED

(Manufacturing of RANA® LION TMT Saria, Steel Structures/Girders)

RANA® PAPERS LIMITED

(Manufacturing of Kraft Paper & Steel Ingots)

RANA® BAR LIMITED

(Manufacturing of Steel Structures & M.S. Ingots)

RANA® INDUSTRIES LIMITED

(Manufacturing of Steel Structures)



we make the nation strong

IS : 2062



DGS&D Approved



Registered Office :

Rana Chowk, Meerut Road, MUZAFFARNAGAR-251 003

Ph.: +91-131-2623812, 9927055812 | Fax.: +91-131-2623612, 2623712

Sales Mob.: +91-9358005476, 9837005476, +91-131-3291164

Delhi Office :

B-5, III Floor, Tagore Market, Kirti Nagar, NEW DELHI-110 015

Ph. : +91-11-25159042, 25159043 | Mob. : +91-9313290764, 9313290765

Visit us at : www.ranasteels.com | E-mail : ranasteels@rediffmail.com